



DOWNTOWN
OKC

AVAILABLE
119,738 SF

Leased

SW 13TH ST.

OKC SW 13TH | FOR LEASE

5601 SW 13TH ST., OKLAHOMA CITY, OK



BRETT PRICE, CCIM, SIOR
bprice@newmarkrp.com
C: 405.613.8380

KRIS DAVIS, SIOR
kgdavis@newmarkrp.com
C: 405.202.9525

KARLEY HARPER
kharper@newmarkrp.com
C: 405.371.3498

NEWMARK
ROBINSON PARK

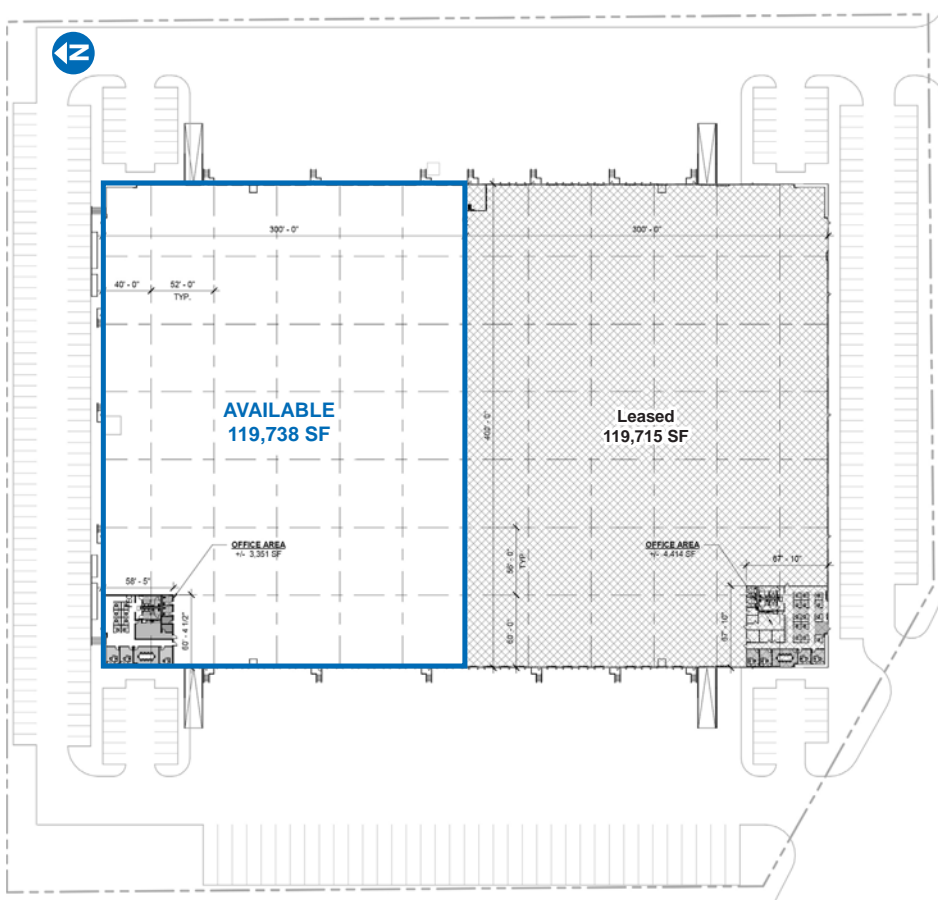
PROPERTY DETAILS

Available SF	119,738 SF±
Lease Rate	Contact Broker
Building Size	239,453 SF±
Lot Size	12.25 Acres±
Market	Oklahoma City
Submarket	Southwest
Cross Street	SW 13th & MacArthur

PROPERTY OVERVIEW

OKC SW 13th is a new, cross dock industrial development located in the southwest submarket of Oklahoma City. The property is a two minute drive to I-40, five minutes to I-44 and Hwy 152, and 10 minutes to the Kilpatrick Turnpike, I-35, I-240 and Will Rogers World Airport.

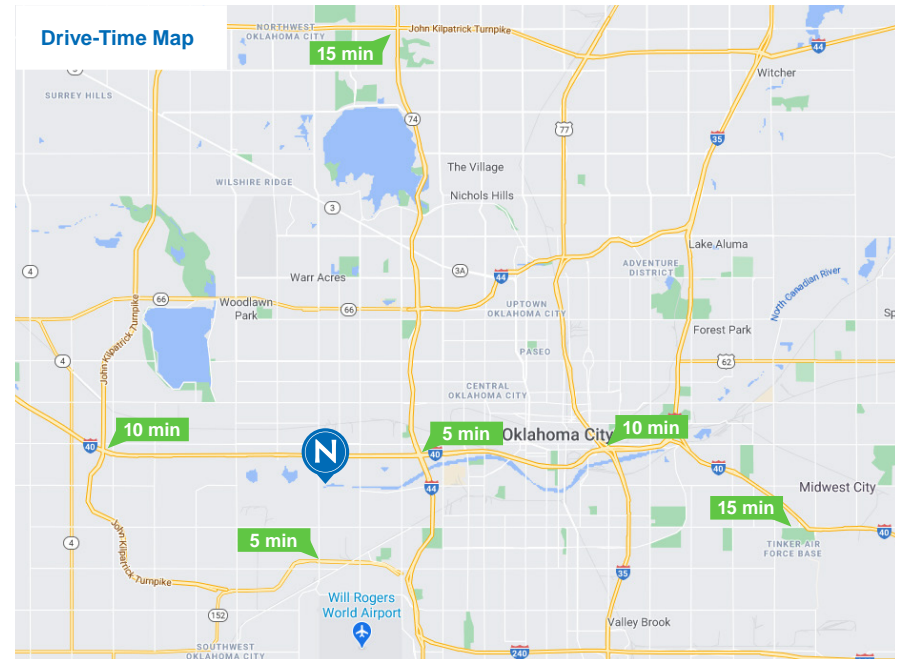
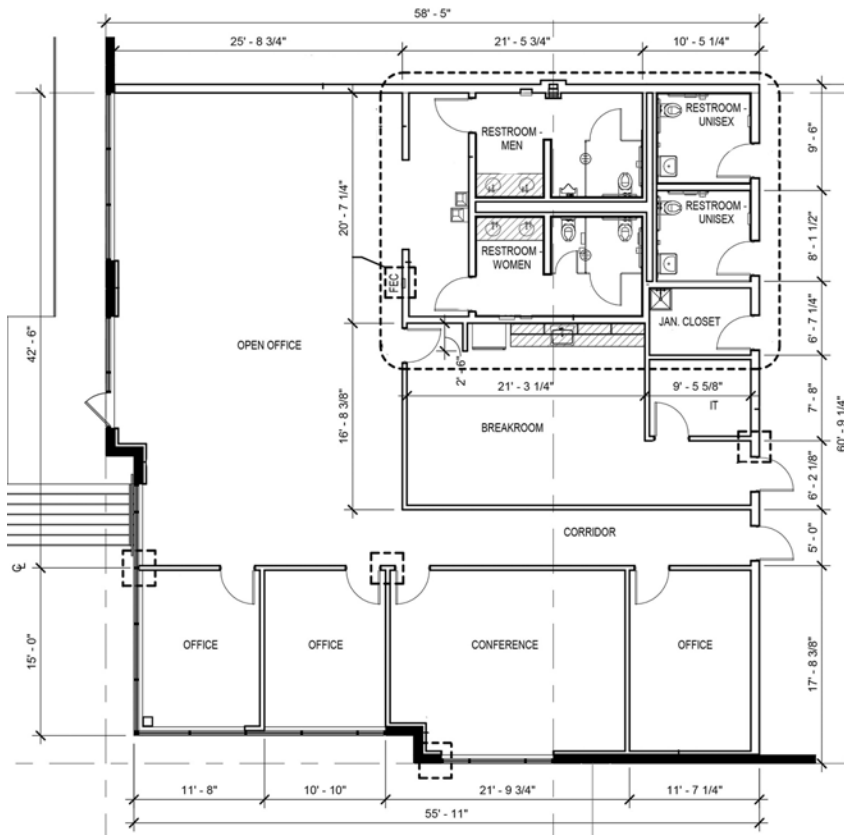
Several national and international tenants are in the area including Amazon, Hobby Lobby, Wal-Mart, Home Depot, and Medline.



AVAILABLE SPACE HIGHLIGHTS

Cross-dock facility	(28) 9' x 10' dock doors
ESFR sprinklers	(2) 12' x 14' grade level doors w/ ramp
32' clear height	(2) 40,000 lb mechanical dock levelers
52' x 56' column spacing	2 LED light fixtures per bay
60' speed bay	146 car parks 18 trailer parks
130' - 180' truck court	3,351 SF± office space
White box interior walls	Shell completed August 2023

Office Floor Plan - 3,351 SF± (estimated delivery Q4 2023)



DOWNTOWN
OKC

AVAILABLE
119,738 SF

Leased

SW 13TH ST.